



DEKOID 98


Technical Product Catalog

2025-2026

At Dekoid 98, we have been manufacturing high-performance paints for the most demanding sectors for over 60 years. Under the Picoso brand, we offer professional solutions that guarantee quality, protection, and reliability in every application.

www.dekoid98.com

INDEX

- 01** About us
 - 02** Product lines
 - 03** Quality Assurance
 - 04** Contact
- 

About Us

Dekoin 98 S.L. is a family business with over 60 years of experience in the high-performance paint manufacturing industry. Our history is a brand that has evolved alongside the needs of the industry and the market.

Under **Picoso** brand, we offer innovative solutions tailored to each sector: industrial, decorative, and the car industry. Our technical expertise, combined with a constant focus on **quality and sustainability**, allows us to develop products that meet the highest standards in protection, performance, and finish.

We work closely with our customers to ensure **long-lasting, efficient, and aesthetically flawless results** on all types of surfaces and under all application conditions.



Our History

Dekoin 98 was founded in 1965 as a family business dedicated to the manufacturing of industrial paints. More than six decades later, we continue to evolve alongside our customers to offer quality and reliability.



Our Team

We have a highly qualified technical team in formulation and quality control. We combine tradition and innovation to develop paint solutions tailored to each application.

Product Lines

At Dekoin 98, we manufacture high-performance paints for multiple sectors.

Under **Picosa** brand, we offer four product lines that guarantee quality, protection, and aesthetics in every application.

Our product lines are the following:

■ **Picosa Industrial**
High-performance industrial coatings.

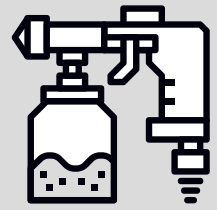
■ **Picosa Decor**
Decorative paints for interiors and exteriors.

■ **Picosa Auto**
Paints and systems for automotive bodywork.

■ **Picosa Color Lab**
Tinting system for custom colors.



Picosa Industrial



High-performance industrial coatings

Our **Picosa Industrial** line is designed to offer protection and finishing solutions in the most demanding industrial environments.

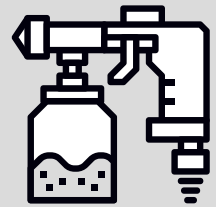
Formulated with high-quality raw materials and advanced technologies, our paints guarantee excellent chemical, mechanical, and weather resistance.

Designed to maximize durability and performance in metal structures, machinery, surfaces exposed to aggressive agents, and extreme environments.

Application areas: heavy industry, port structures, power industry, metal construction, boiler making, storage, transportation, industrial machinery, and equipment.



Picosa Industrial



PMC: any color

- Drying time: 5-10 minutes
- Recoating: 15 minutes
- Gloss: matte
- Surface: steel and cast iron
- Application: airless and airmix



PPH: any color - (zinc phosphate)

- Drying time: 5-10 minutes
- Recoating time: 15 minutes
- Gloss: matte
- Surface: steel and cast iron
- Application: airless and airmix



EPOXY PXI: any color

- Drying time: 30 minutes
- Recoating: 15 minutes
- Gloss: matte
- Surface: castings, galvanized and light metals
- Application: airless and airmix



PFA (anti-corrosive paint): any color

- Drying time: 20 minutes
- Gloss: +85%
- Surface: steel
- Application: airless, airmix, and electrostatic (verify)



PF/70 (anti-corrosive paint): any color

- Drying time: 20 minutes
- Gloss: \pm 70%
- Surface: steel
- Application: airless, airmix, and electrostatic (verify)



PPH/T: any color - (zinc phosphate)

- Drying time: 20 minutes
- Gloss: matte
- Surface: steel
- Application: airless, airmix, and electrostatic (verify)



PF/30s: any color

- Drying time: 20 minutes
- Gloss: 25-30%
- Surface: steel
- Application: airless and airmix



PI/30: any color – more versatile paint

- Drying time: 25-30 minutes
- Gloss: 80-90%
- Surface: steel and Primers: PXI, PMC, and PPH
- Application: airless, airmix, and electrostatic, roller, and brush



PA/30 acrylic: any color – highest quality

- Drying time: 20-25 minutes
- Gloss: 95%
- Surface: steel and Primer: PXI, PMC, and PPH
- Application: airless, airmix, and electrostatic (verify), roller, and brush



POX/30 EPOXY: any color

- Drying time: 20 minutes
- Gloss: 90%
- Surface: steel and Primer: PXI
- Application: airless, airmix, and electrostatic (verify)



S/60: any color

- Drying time: 20 minutes
- Gloss: 90%
- Surface: steel and Primer: PXI, PMC, and PPH
- Application: airless, airmix, electrostatic (verify), roller, and brush



S/36: any color – standard paint

- Drying time: 20 minutes
- Gloss: 90%
- Surface: steel and Primer: PMC and PPH
- Application: airless, airmix, and electrostatic (verify)



S/80: any color

- Drying time: 20-30 minutes
- Gloss: 90%
- Surface: steel and Primer: PXI, PMC, and PPH
- Application: airless, airmix, and electrostatic (verify)



PICOFLOOR EPOXY: any color

- Drying: 3 hours - air drying
- Repainting: minimum 24 hours
- Gloss: 80-90%
- Surface: steel, floors, and cement
- Application: airless, airmix, roller, and brush



Polyurethane enamel

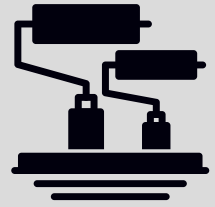
- Drying: Instant - Oven baking: 15 minutes at 100°C
- Gloss: 80-85%
- Surface: steel and iron
- Application: airless, airmix, and electrostatic (verify)



Yellow acrylic enamel for road markings

- Drying time: 20 minutes - Air drying
- Gloss: minimum 40%
- Surface: roads and traffic signs
- Application: airless, airmix, and roller

Picosa Decor



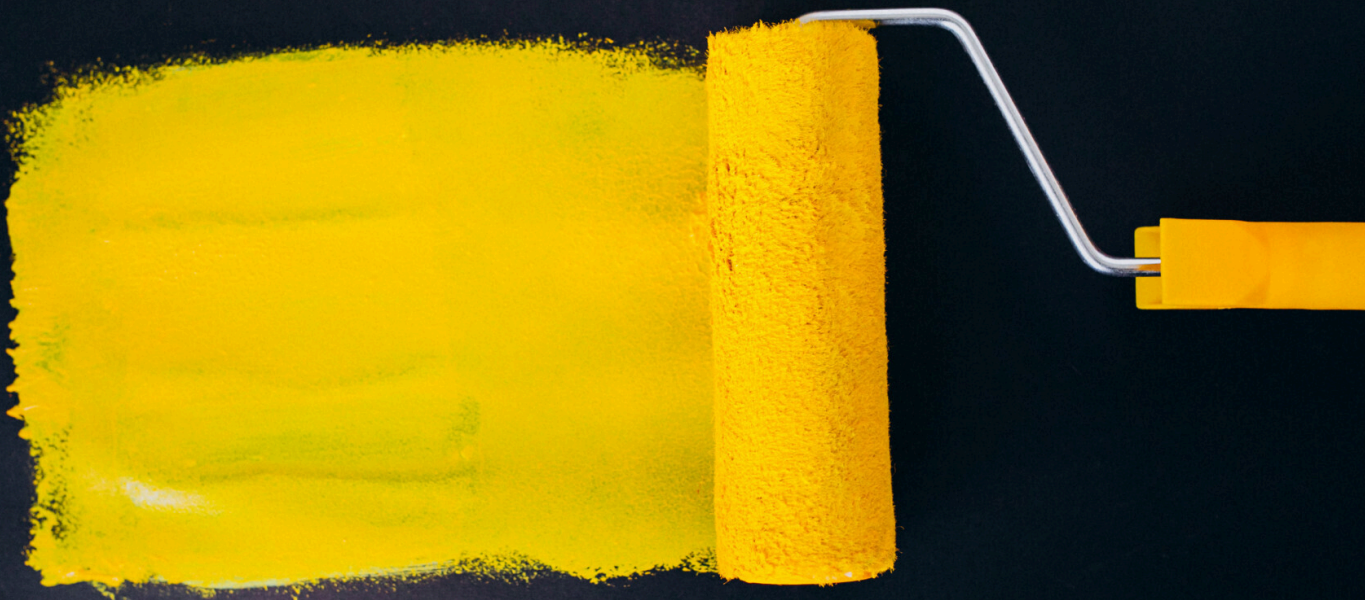
Highly aesthetic and technically advanced decorative paints

Picosa Decor line combines technical innovation and design to offer high-quality aesthetic finishes in all types of spaces.

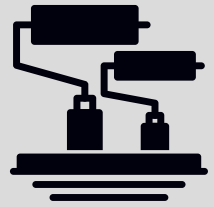
Our products provide excellent coverage, resistance to cleaning and durability, ensuring perfect surfaces both indoors and outdoors.

We offer a wide range of colors, finishes, and textures, adapted to market trends and the needs of each customer.

Application areas: exterior (facades) and interior, floors, homes, offices, hotels and gastronomic venues, commercial spaces, educational centers, public buildings.



Picosa Decor



PI/30: any color – more versatile paint

- Drying time: 25-30 minutes
- Gloss: 80-90%
- Surface: steel and Primers: PXI, PMC, and PPH
- Application: airless, airmix, roller, and brush



PA/30 acrylic: any color – highest quality paint

- Drying time: 20–25 minutes
- Gloss: 95%
- Surface: steel and Primer: PXI, PMC, and PPH
- Application: airless, airmix, roller, and brush



S/60: any color

- Drying time: 20 minutes
- Gloss: 90%
- Surface: steel and Primer: PXI, PMC, and PPH
- Application: airless, airmix, roller, and brush



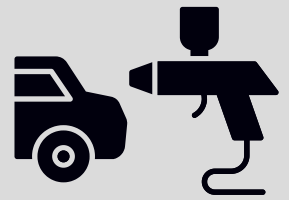
PICOFLOOR EPOXY: any color

- Drying: 3 hours - air drying
- Repainting: minimum 24 hours
- Gloss: 80-90%
- Surface: steel, floors, and cement
- Application: airless, airmix, roller, and brush



PICOPLAST (plastic paint): any color

- Drying: 60 minutes - air drying
- Repainting: 2-4 hours
- Gloss: matte
- Surface: facades, partitions, interiors, and exteriors
- Application: airless, airmix, and roller



Paint solutions for demanding applications

Our **Picosa Auto** line is designed to offer protection and finishing solutions in the most demanding industrial environments.

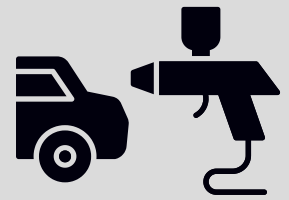
Formulated with high-quality raw materials and advanced technologies, our paints guarantee excellent chemical, mechanical, and weather resistance.

Designed to maximize durability and performance in metal structures, machinery, surfaces exposed to aggressive agents, and extreme environments.

Application areas: industrial bodywork, heavy industry, water vessels, automotive sector, agricultural machinery, and professional transportation vehicles.



Picosa Auto



PRIMER: any color

- Drying time: 5-10 minutes
- Recoating: 15 minutes
- Gloss: matte
- Surface: bodywork
- Application: Airless and Airmix



MS VARNISH: any color - very high quality

- Drying time: 20-25 minutes
- Gloss: 95%
- Surface: bodywork
- Application: Airless and Airmix



PA/30 acrylic: any color – highest quality paint

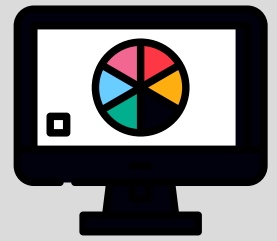
- Drying time: 20-25 minutes
- Gloss: 95%
- Surface: bodywork and Primer: PXI, PMC, and PPH
- Application: airless, airmix, and electrostatic (verify), roller, and brush



PI/30: any color – more versatile paint

- Drying time: 25-30 minutes
- Gloss: 80-90%
- Surface: bodywork and Primers: PXI, PMC, and PPH
- Application: airless, airmix, and electrostatic, roller, and brush

Picosa Color Lab



Tinting system for custom colors

Picosa Color Lab is our advanced tinting system, developed to offer maximum flexibility in creating custom colors.

Enables accurate reproduction of a wide range of colors for different product lines (industrial and automotive), optimizing time and resources in application procedures.

An indispensable tool for distributors and professionals seeking to offer their customers a differentiated service.

Application areas: retail outlets, paint distributors, body shops, and refinishing shops.





Quality Assurance

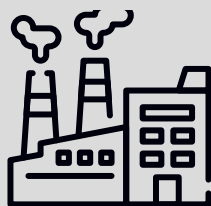
At **Dekoin 98 S.L.**, **quality** is the keystone of our business.

Our products are developed under strict quality controls at every stage of production, ensuring optimal and consistent performance in all application environments.

We work with high-quality raw materials and certified protocols, ensuring that each batch of paint complies with the most demanding market regulations and expectations.

Furthermore, our commitment to innovation allows us to offer solutions that not only meet but exceed standards for **durability, resistance, and sustainability**.

Trust, safety, and performance: this is how we guarantee the value of every product that bears the **Picosa** seal.



DEKOID 98 S.L

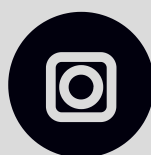
Contact

www.dekoid98.com

comercial@dekoid98.com

+34 945 237 869

Dulantzi Street 34, Salvatierra - 01200



@dekoid98

